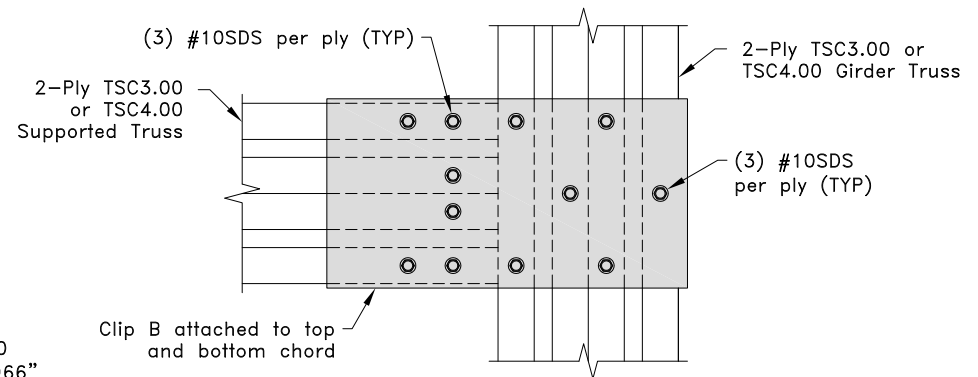


Web Connection Plan View



Chord Connection Plan View

General Notes:

1. The top and bottom chords of all trusses shall be properly connected to structural sheathing or purlins, designed by others.
2. SDS = self-drilling tapping screw
3. Screw end distance and edge distance is 9/32" minimum. Screw spacing is 9/16" minimum.
4. R_v refers to vertical reaction, and U refers to uplift.
5. Clip fastener placement is identical on opposite side to what is shown.
6. Cold-Formed Steel calculations are per the 2010 supplement to the AISI 2007 "North American Specification for the Design of Cold-Formed Steel Structural Members" (S100-07/S2-10).



www.TrusSteel.com

Florida: 2400 Lake Orange Drive, Suite 150 / Orlando, FL 32837 / (800) 755-6001
Missouri: 13723 Riverport Drive, Suite 200 / Maryland Heights, MO 63043 / (800) 326-4102

90° Truss-To-Truss Connection

Alpine, a division of ITW Building Components Group, Inc. shall not be responsible for any performance failure in a connection due to a deviation from this detail. Any variation from this detail shall be approved in advance by Alpine, a division of ITW Building Components Group, Inc.

Custom Detail:

CD170108

Date:

01/27/17

Custom Detail Category:

Truss-To-Truss Connection